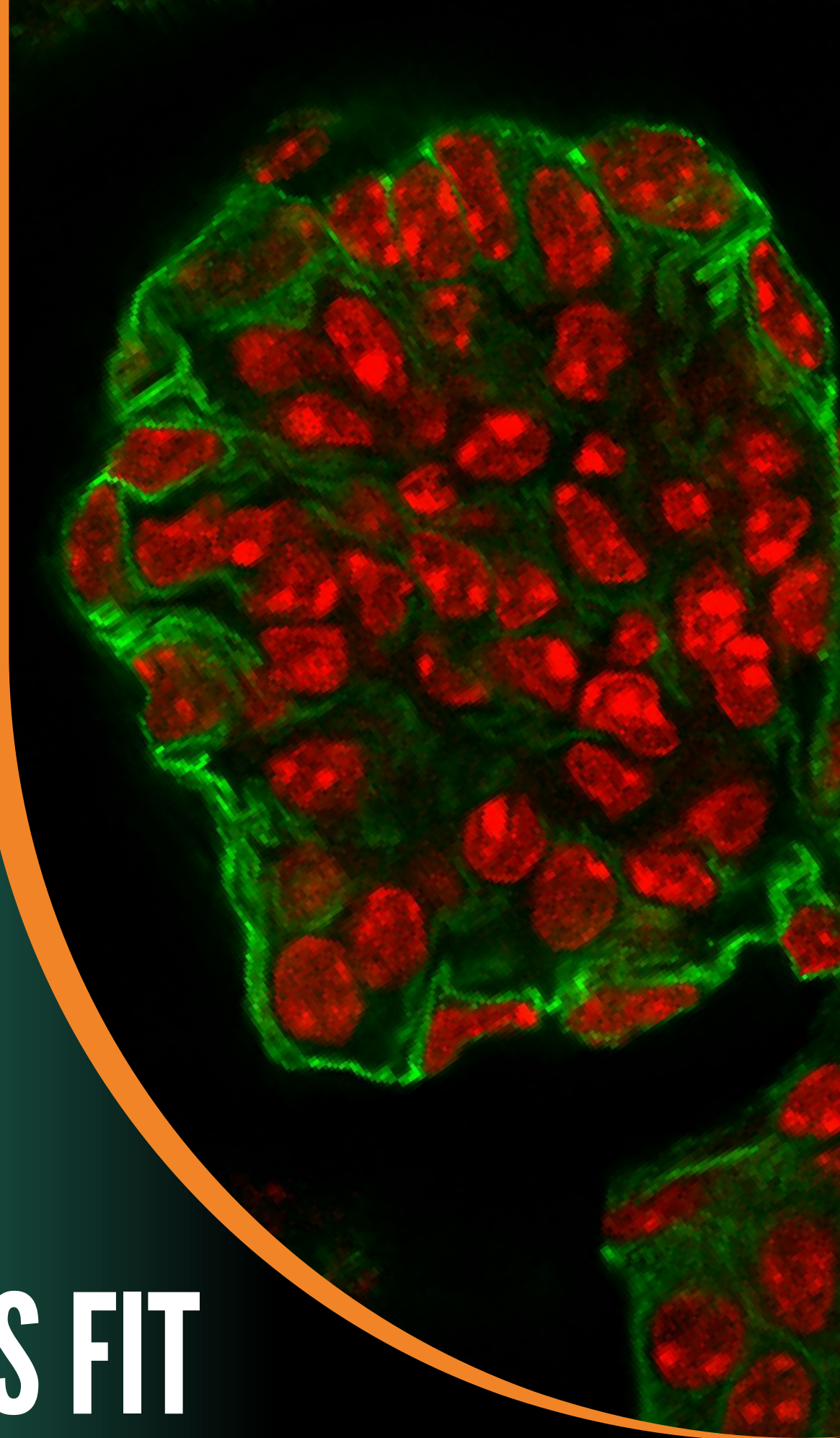
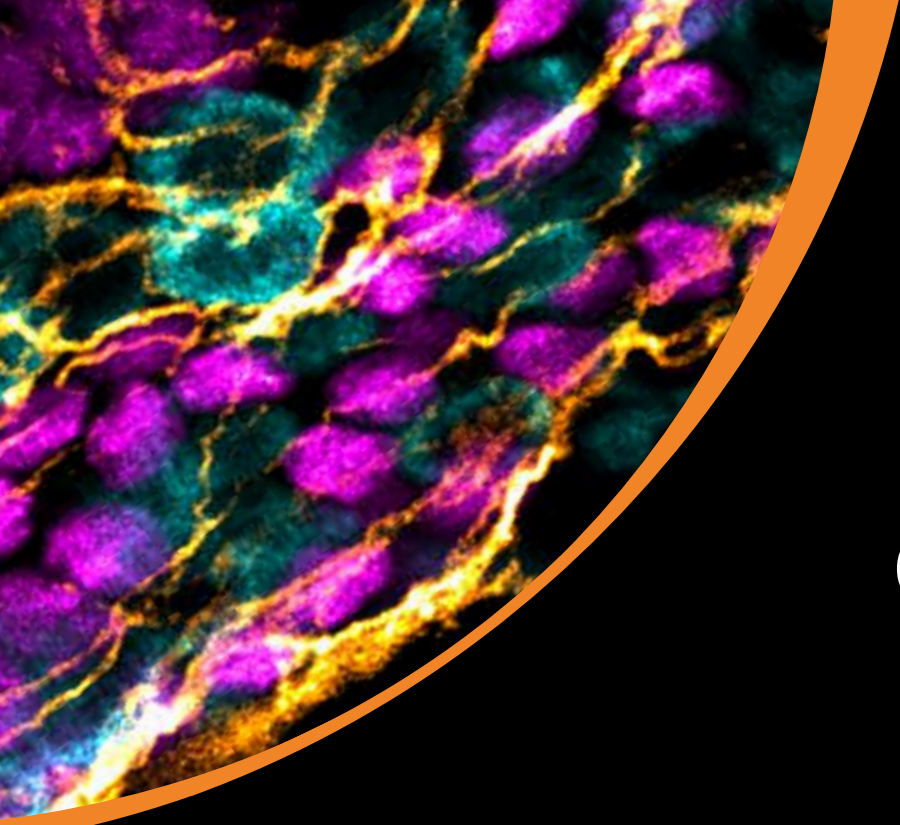


Quick Knowledge PART 3

HOW DO RESCANS FIT WITHIN CONFOCAL MICROSCOPY LANDSCAPE?





There are 3 **types** of confocal technologies

1967

Spinning Disks (**SD**), where an image from many pinholes is projected on the camera as a detector

1969

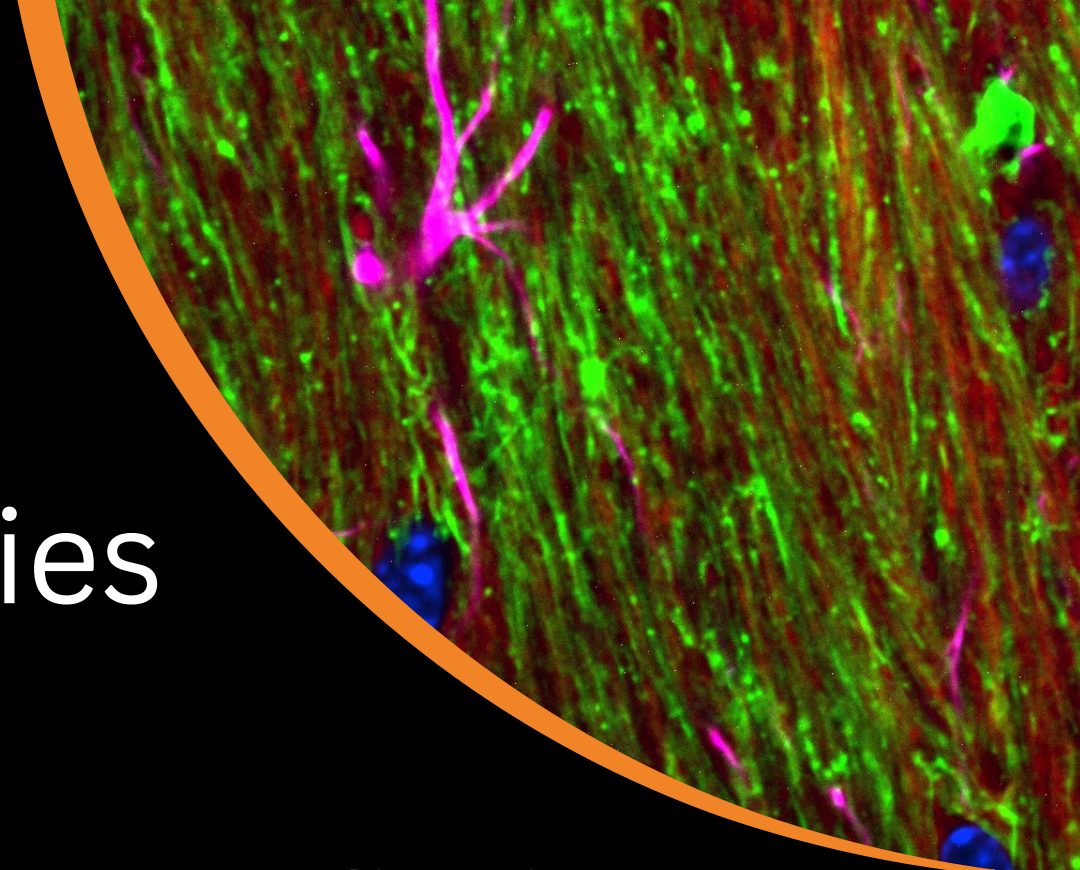
Laser Scanning Confocal Microscopes (**LSCM**) with, usually, a PMT detector directly after one pinhole

2016

REscan confocals, with an additional scanning optical system between the pinhole and the camera detection
(*see PART 1*)



Comparison of confocal technologies



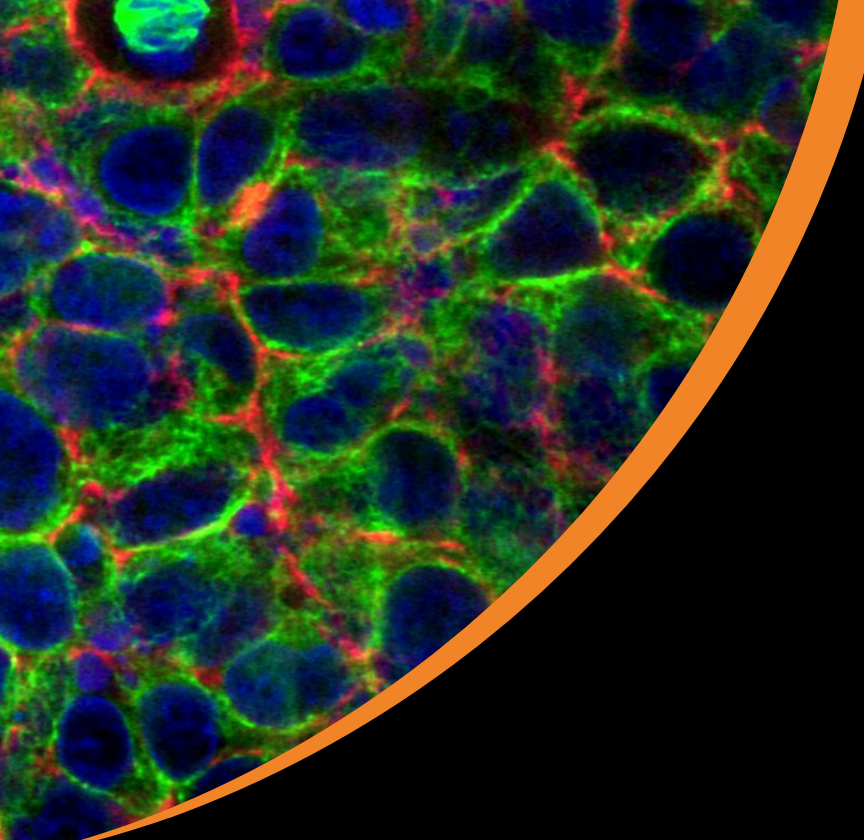
Based on advantages in different applications:

	Low phototox.	Fast imaging	Deep imaging	Super Resolution (SR)
SD	✓	✓	✓	✗
SD+SR add-on	✓	✓	✗	✓
LSCM	✗	✗	✗	✗
LSCM+SR add-on	✗	✗	✗	✓
Point <i>REscan</i>	✓	✗	✓	✓
Line <i>REscan</i>	✓	✓	✓	✗

Line *REscan* is comparable to SD

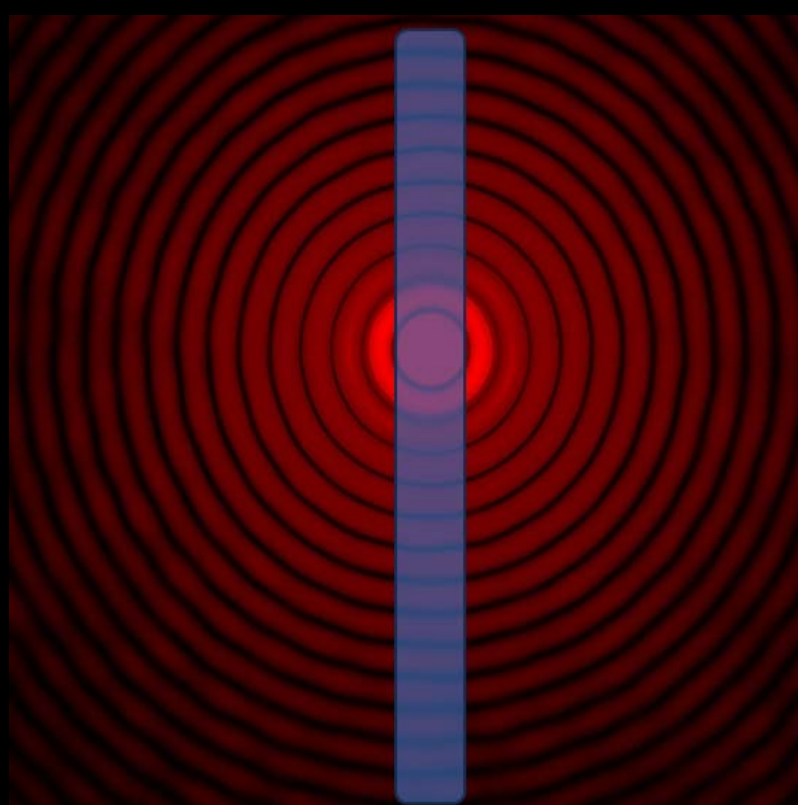
Point *REscan* is comparable to LSCM+SR add-on





Line *REscan* vs Point *REscan*: Confocality

Line *REscan*



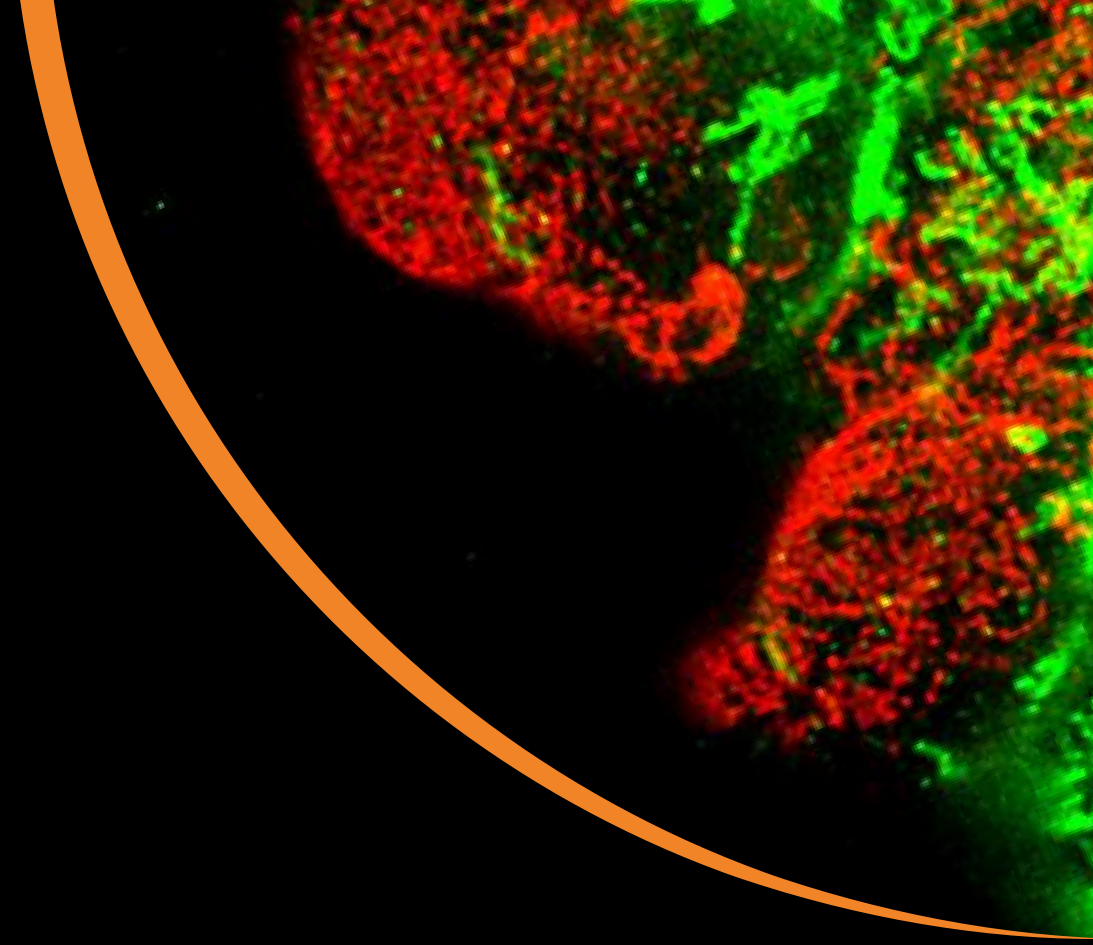
Point *REscan*



In **Line *REscan***, compared to **Point *REscan***, we have consciously sacrificed a fraction of confocality to gain a tremendous improvement in speed (*similar to confocality/speed in SD vs LSCM, respectively*).



Line *RE*scan vs Spinning Disk: Pinhole



Pinhole

Illumination

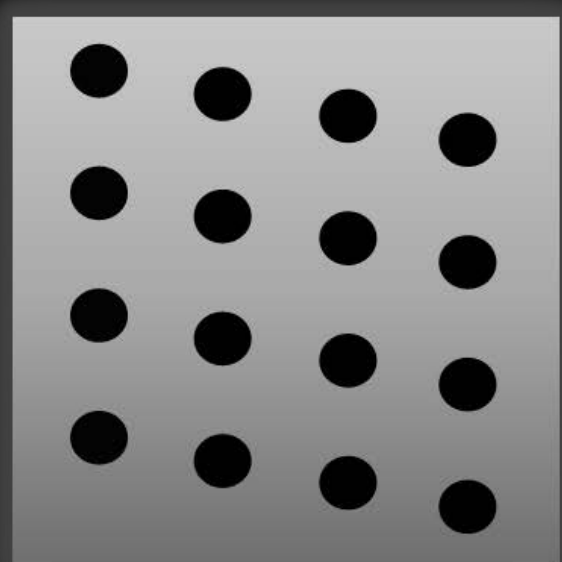
Line *RE*scan



Slit

Line

SD



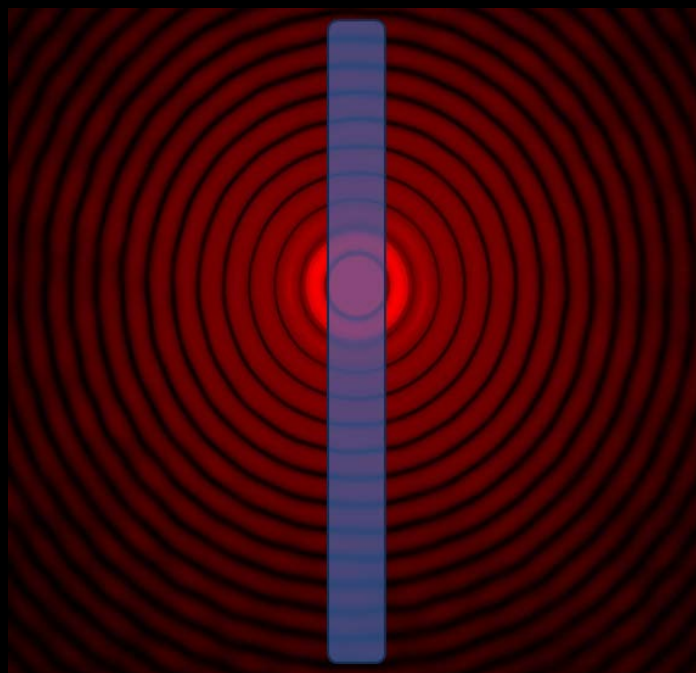
Multiple circular

Array of beams

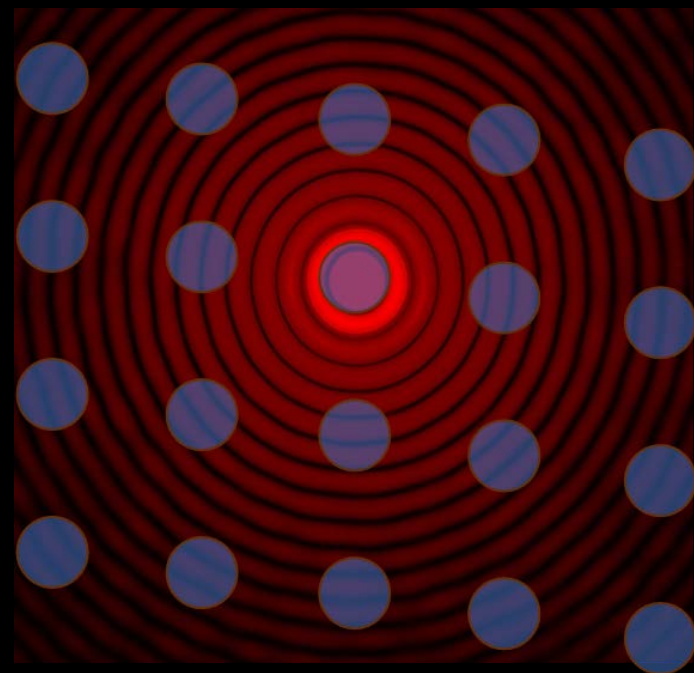


Line *REscan* vs Spinning Disk: Confocality

Line *REscan*



SD



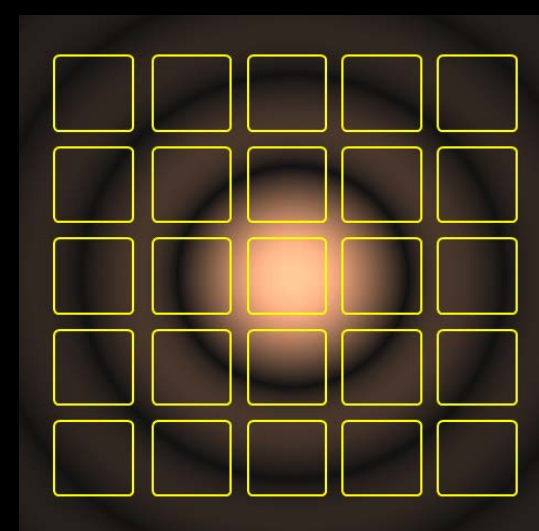
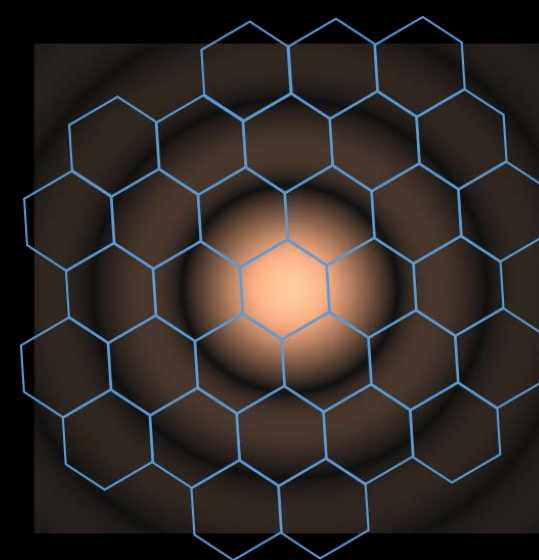
Line *REscan* and SD have reduced confocality compared to **Point *REscan*** or LSCM.

With more depth, the crosstalk of many pinholes is evident in SD but not in **Line *REscan***, making the latter **superior for deep imaging**.



Advantages of **Point REscan** compared to LSCM+SR add-on?

- 1. Lower phototoxicity,**
- 2. Brighter signal,**
- 3. Deeper imaging,** all three due to:
 - a) higher sensitivity of the detector
 - b) larger pinhole (*see PART 1*)
- 4. Optically fixed super resolution**
(*no processing necessary*)



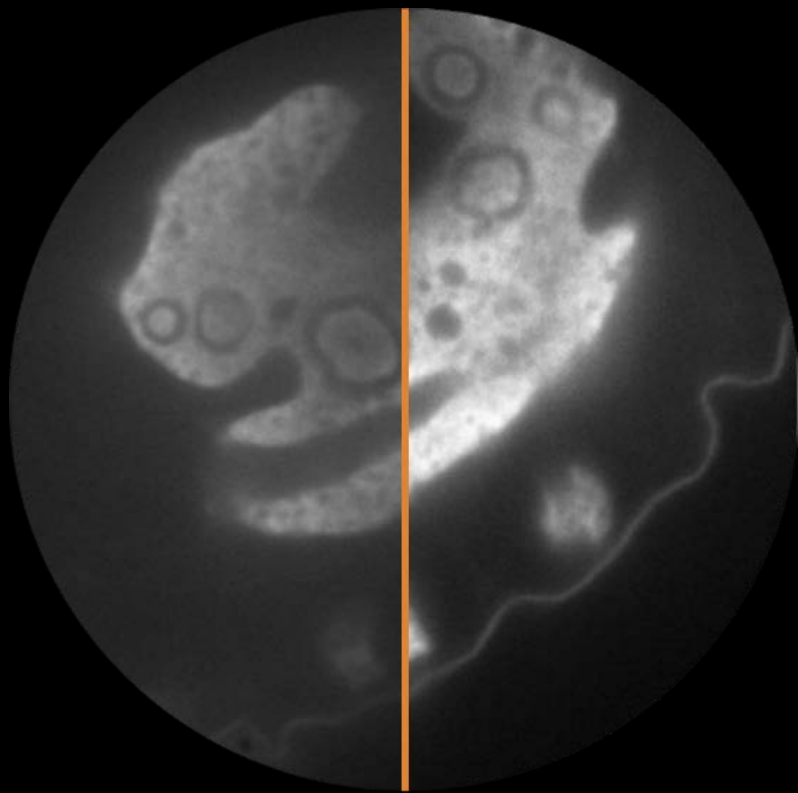
Different detectors in LSCM+SR add-on





Comparing *REscans* to corresponding confocals

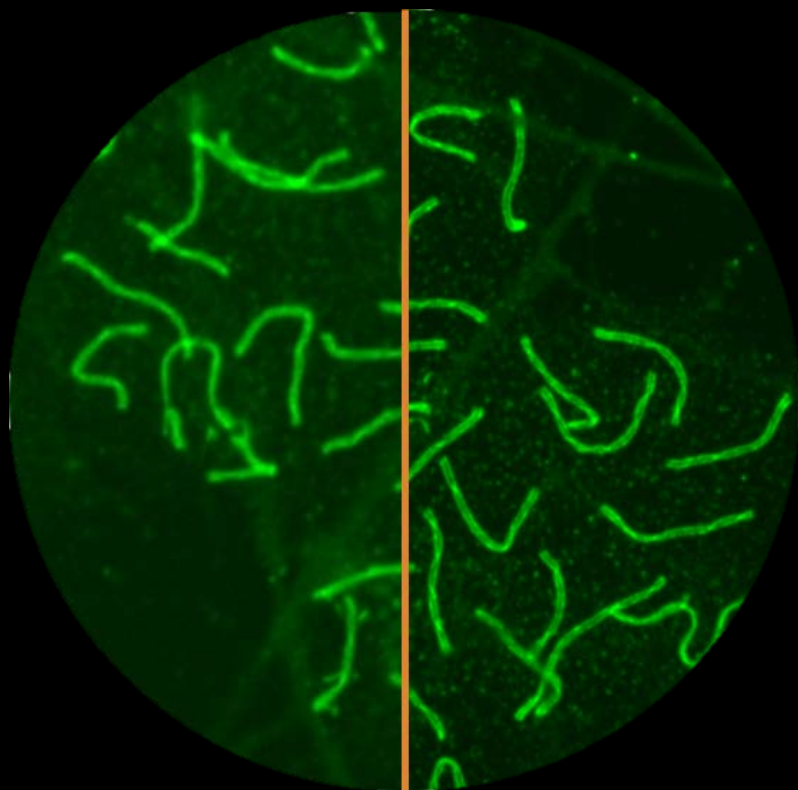
SD



Line *REscan*

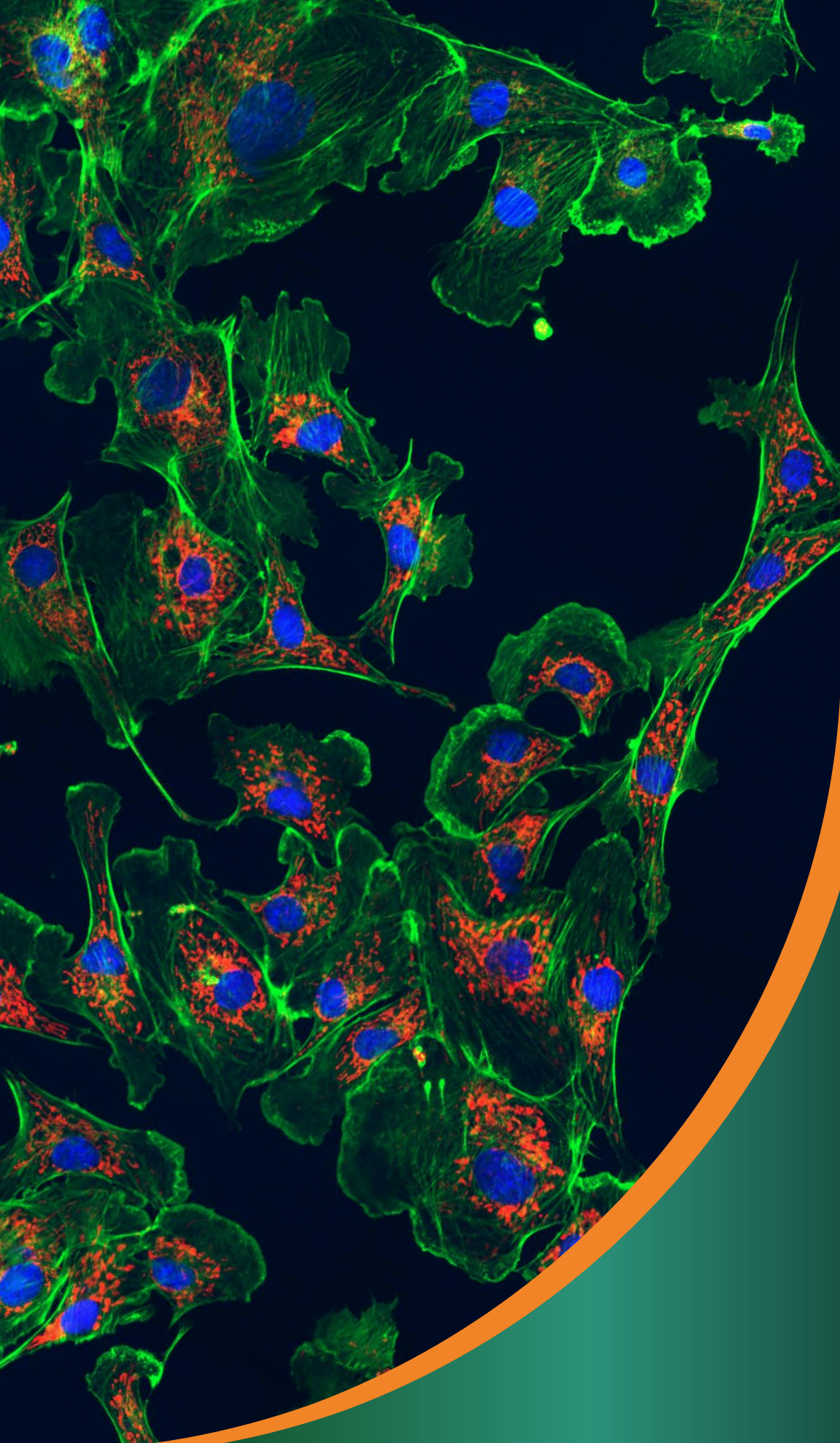


LSCM



Point *REscan*





Find out more at
www.confocal.nl

*With REscan, we develop more.
See **GAIA**, our REvolutionary **Point**
REscan Super resolution confocal!*



Confocal.nl

